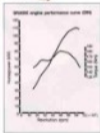
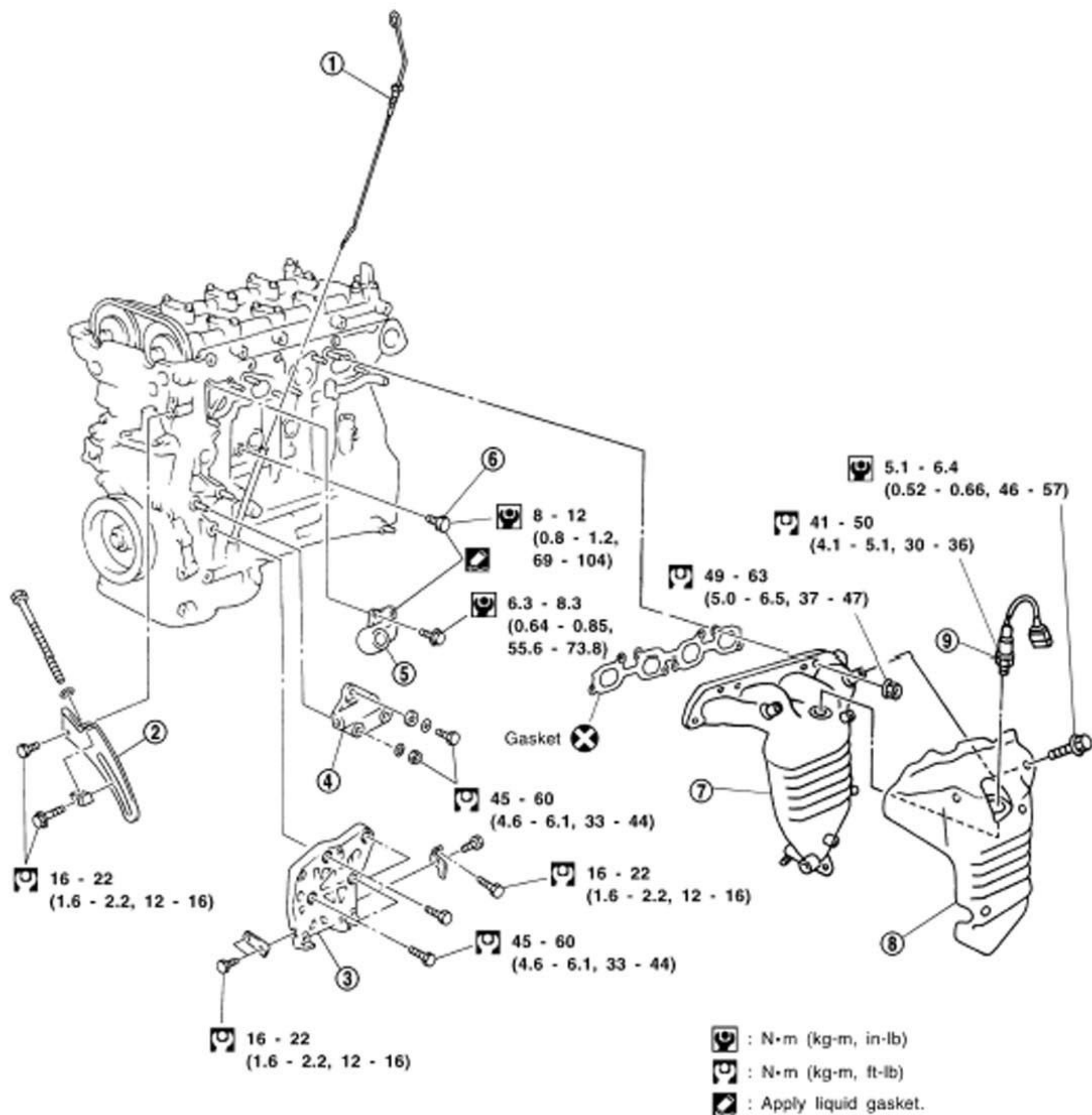


SR20DE





SEM019G

1. Oil level gauge
2. Generator adjusting bar
3. A/C compressor bracket

4. Generator bracket
5. Water outlet
6. Cylinder block drain plug

7. Exhaust manifold (With three way catalyst)
8. Exhaust manifold cover
9. Heated oxygen sensor

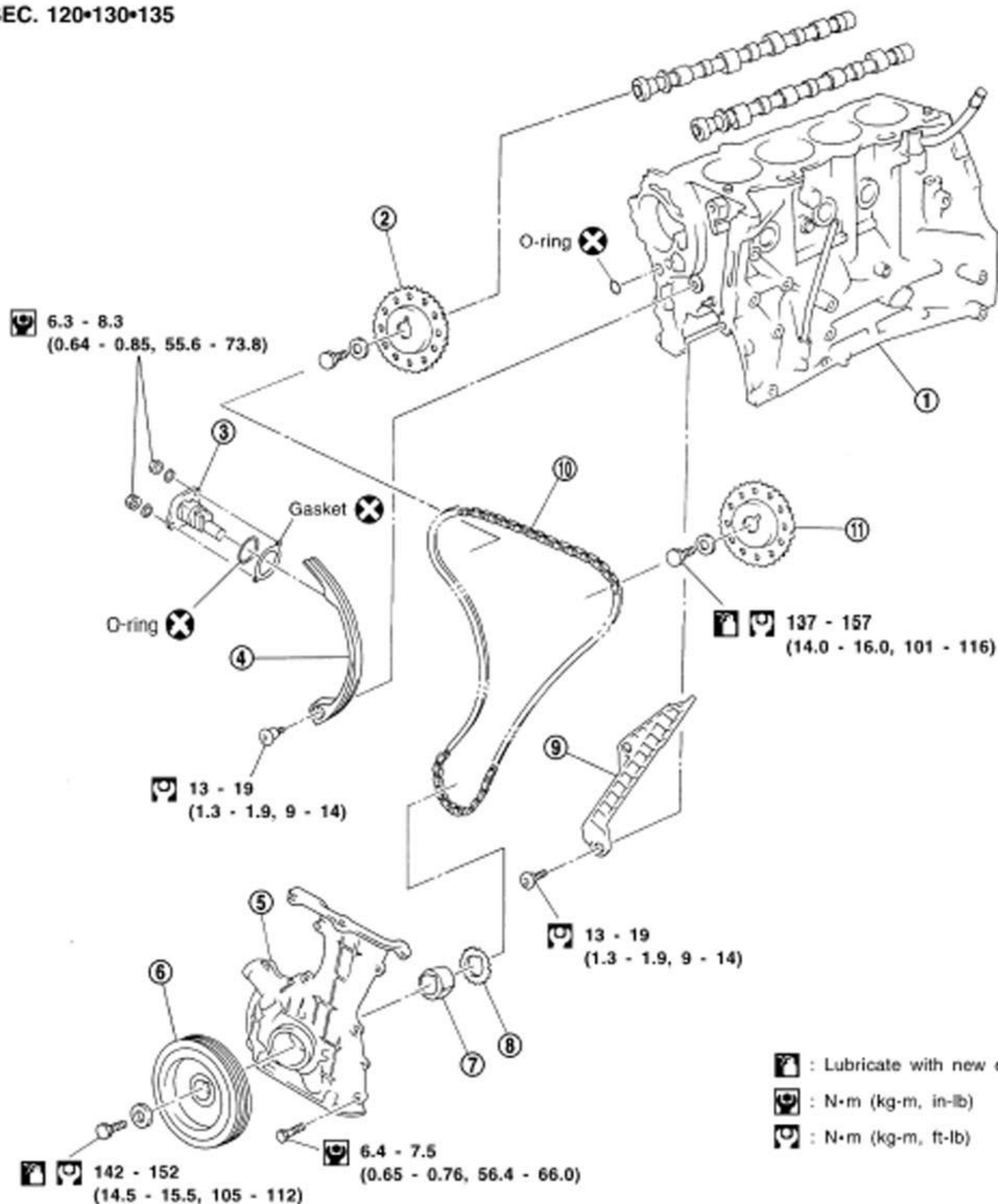
Components

NCZM5011

CAUTION:

- After removing timing chain, do not turn crankshaft and camshaft separately, or valves will strike piston heads.
- When installing rocker arms, camshafts, chain tensioner, oil seals, or other sliding parts, lubricate contacting surfaces with new engine oil.
- Apply new engine oil to bolt threads and seat surfaces when installing, camshaft sprockets, crankshaft pulley, and camshaft brackets.

SEC. 120•130•135



1. Cylinder block
2. RH camshaft sprocket
3. Chain tensioner
4. Chain guide

5. Front cover
6. Crankshaft pulley
7. Oil pump drive spacer
8. Crankshaft sprocket

9. Chain guide
10. Timing chain
11. LH camshaft sprocket

SEM061G

